



TSUKUBA EXPRESS



* The **TSUKUBA EXPRESS** will begin service in 8.24.2005.

45 minutes
Akihabara - Tsukuba

Metropolitan Intercity Railway Company

The TSUKUBA EXPRESS Project

The TSUKUBA EXPRESS Project is a plan to create a rapid-transit railway line, that will travel northeast through the Metropolitan Area from Akihabara, Tokyo to Tsukuba, Ibaraki. The Project also aims to develop new urban residential areas and to bring new vitality to regions located along the new railway lines.

Four Core Objectives



Improve transportation network in the northeast region of the Greater Tokyo district.



Alleviate the level of congestion of the JR Joban Line and other existing railway lines.



Develop new residential neighbourhoods in the Metropolitan Area.



Create industrial infrastructure and core business cities along the railway lines.

TSUKUBA EXPRESS Route map



Stations connecting with Other Railway Lines

Akihabara	JR Yamanote Line, JR Keihin Tohoku Line, JR Sobu Line, Hibiya Subway Line
Shin-Okachimachi	Toei Oedo Line
Minami-Senju	JR Joban Line, Hibiya Subway Line
Kita-Senju	JR Joban Line, Tobu Iseaki Line, Hibiya Subway Line, Chiyoda Subway Line
Minami-Nagareyama	JR Musashino Line
Nagareyama-Ōtakanomori	Tobu Noda Line
Moriya	Kanto Railway Josō Line

Train Route

Segment	Length	Name of cities
Between Akihabara and Tsukuba	58.3km	Traveling Through
Tokyo Metropolis	13.2km	passing through Chiyoda, Taito, Arakawa, and Adachi
Saitama Prefecture	7.4km	passing through Yashio and Misato
Chiba Prefecture	13.5km	passing through Nagareyama and Kashiwa
Ibaraki Prefecture	24.2km	passing through Moriya, Yawara, Ina, and Tsukuba

"Miraidaira-Ichisato", Creating Ideal Urban Areas Along **TSUKUBA EXPRESS**

In addition to creating an urban rapid-transit railway line that will travel through the northeast section of the Metropolitan Area between Akihabara and Tsukuba, the **TSUKUBA EXPRESS** Project also aims to create Miraidaira-Ichisato, new urban centers amidst the lushly green areas along the railway line.

In Ibaraki, the residential and city functions centered on Tsukuba Science City are being enhanced.

Tsukuba Science City is home to many national and corporate research institutes. A large-scale development project is underway on a vast plot of 1,800 ha with the Science City serving as the core. Centered around the six stations of Moriya, Miraidaira, Midorino, Banpaku-Kinen-Koen, Kenkyu-Gakuen, and Tsukuba, ideal cities offering a balanced distribution of sophisticated commercial, business, and cultural facilities and superior residential urban areas are now being developed.

In Chiba, new towns that will serve as the heart of the region are being created as new hubs for exchange in the Metropolitan Area.

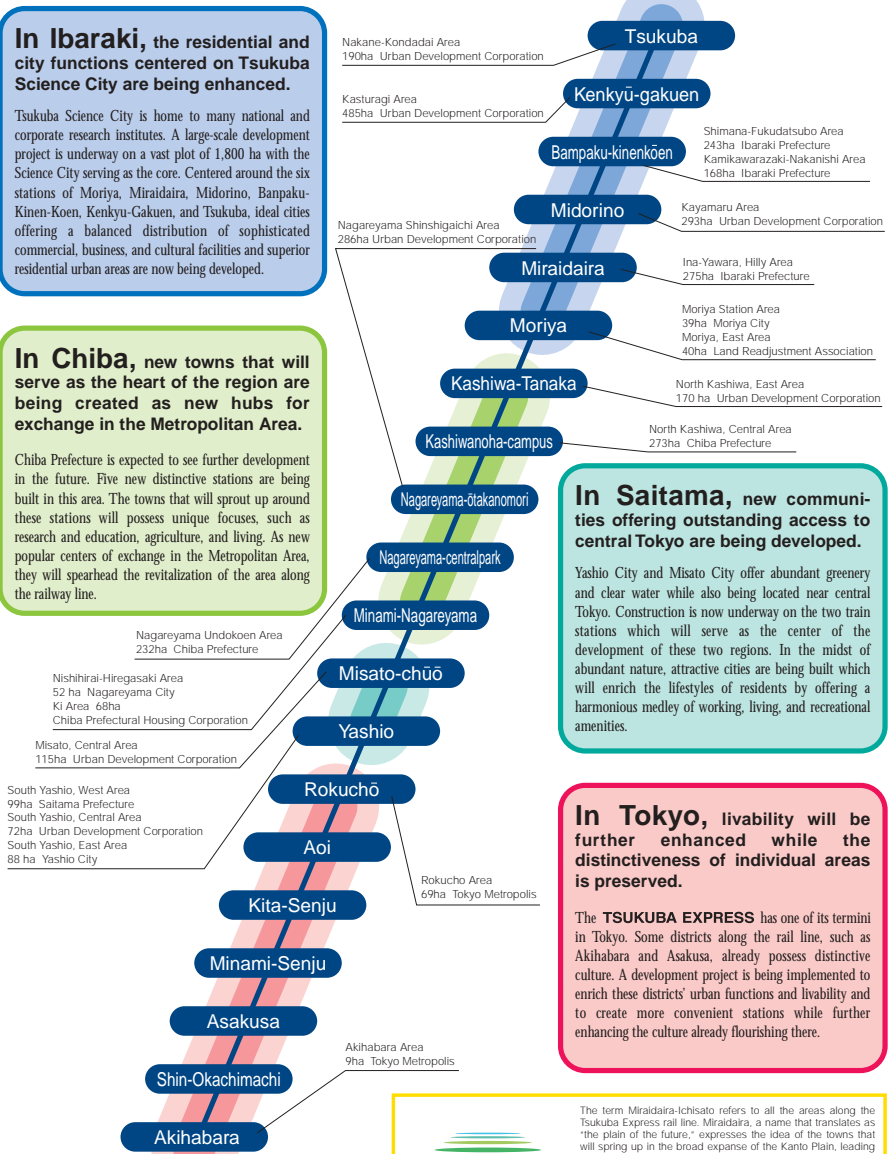
Chiba Prefecture is expected to see further development in the future. Five new distinctive stations are being built in this area. The towns that will sprout up around these stations will possess unique focuses, such as research and education, agriculture, and living. As new popular centers of exchange in the Metropolitan Area, they will spearhead the revitalization of the area along the railway line.

In Saitama, new communities offering outstanding access to central Tokyo are being developed.

Yashio City and Misato City offer abundant greenery and clear water while also being located near central Tokyo. Construction is now underway on the two train stations which will serve as the center of the development of these two regions. In the midst of abundant nature, attractive cities are being built which will enrich the lifestyles of residents by offering a harmonious medley of working, living, and recreational amenities.

In Tokyo, livability will be further enhanced while the distinctiveness of individual areas is preserved.

The **TSUKUBA EXPRESS** has one of its termini in Tokyo. Some districts along the rail line, such as Akihabara and Asakusa, already possess distinctive culture. A development project is being implemented to enrich these districts' urban functions and livability and to create more convenient stations while further enhancing the culture already flourishing there.



The term Miraidaira-Ichisato refers to all the areas along the Tsukuba Express rail line. Miraidaira, a name that translates as "the plain of the future," expresses the idea of the towns that will sprout up in the broad expanse of the Kanto Plain, leading to a new future. Ichisato is composed of two words, ichi, which means "number one" and also "market," and sato, which means "village" or "hometown" and it expresses our anticipation for the areas along the rail line as important future milestones.

みらい平・いちさと
MIRAIHIRA ICHISATO

The TSUKUBA EXPRESS Train Cars and Station Facilities



Running test (phase 1) (TSUKUBA EXPRESS car depot)

Two type of specification for the train cars: One design for the Akihabara-Moriya segment and another for the Akihabara-Tsukuba route

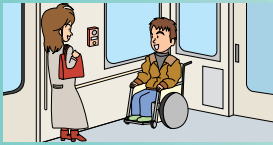
The TSUKUBA EXPRESS will feature train cars of two different designs: the TX-1000 type (Direct Current (1,500V) electric railcar) for the Akihabara-Moriya segment, which is a DC-electrified portion of the line; and the TX-2000 type (Alternating Current (20,000V) -DC electric railcar) for the Akihabara-Tsukuba route, which is AC-DC-electrified.



The TX-1000 type train cars will feature long seats to accommodate the expected volume of commuters to and from the Tokyo Metropolitan Area.



The TX-2000 type train cars, which will run through the entire route between Akihabara and Tsukuba, will have two middle cars equipped with cross seats while all other cars will be equipped with long seats.



Each train will have two wheelchair space areas equipped with handrails, emergency phone, and straps to secure a wheelchair in place.



The courtesy-seat logo printed directly onto the seat backs will heighten awareness of their purpose.

Barrier-free design for wheelchair passengers

The TSUKUBA EXPRESS train cars has been developed subject to the Heart Building Law and the Transportation Accessibility Improvement Law. The concept is measured upon providing to all passengers. The platform gap has been kept to absolute minimization to ensure platform safety.

Advanced safety development: maintainability

An on-train inspection system will monitor mechanical and electrical condition of the train cars. They will also be operated by an ATO (Automated Train Operation), a computer generated control system designed for one man operation.



The lay-out of the instruments and gauges in the driver's cabs has been designed with particular care to allow a single operator to conduct a range of functions from driving the train to opening or closing doors, and also to confirm these operations visually.



Automated platform gate
The platforms will be installed with elegantly colored, automatically sliding doors that provide safety and a sense of security.

Station facilities that are fully accessible to all with large elevators and automated platform gate

The facilities of TSUKUBA EXPRESS stations incorporate the idea of "universal design" to make them accessible to all, in features such as their level floors, wider ticket gates, highly visible and easy-to-understand signs, and convenient restrooms.

TSUKUBA EXPRESS Stations

01 Akihabara



02 Shi-Ogachimachi



03 Asakusa



04 Minami-Senju



20 Tsukuba



05 Kita-Senju



19 Kenkyū-gakuen



06 Aoi



18 Bampaku-Mineriōen



07 Rokuchō



17 Midorino



08 Yashio



16 Miraidaira



09 Misato-chūō



15 Mōrya



10 Minami-Nagareyama



14 Kashiwa-Tanaka



13 Kashiwanoha-campus



12 Nagareyama-Raikorōni



11 Nagareyama-centralpark



The logo design is composed of the letters T and X of "TSUKUBA EXPRESS". Written in a curvilinear sweep with two arcs that join at their tips, the two letters evoke a sense of speed as well as a dynamic power to strive toward the future. The two arcs are also symbolic of the function of the TSUKUBA EXPRESS as a "bridge of dreams" for its passengers and for the people living in the areas along the rail line.

The numbers before the station names represent station numbers

Metropolitan Intercity Railway Company

4-25-7 Taïto, Taïto-ku, Tokyo 110-8554 TEL 03-3839-7311

<http://www.mir.co.jp>